



# GroPep Bioreagents

## IGF-I Polyclonal Antibody (Rabbit)

### Description

This IGF-I antibody was prepared by immunising rabbits with an analogue of human IGF-I. The immunoglobulin fraction was prepared by Protein A affinity chromatography. It detects IGF-I in human, mouse, rat and a range of other mammalian species as well as in chicken and fish. The antibody should be used primarily for immunohistochemistry and Western Ligand blotting.

### References:

Upton Z *et al* (1996) Journal of Endocrinology **149**, 379-397

### Immunogen:

Analogue of human IGF-I

### Source:

Rabbit antiserum. The immunoglobulin fraction was purified by Protein A affinity chromatography of serum obtained from a rabbit immunised with a recombinant analogue of human IGF-I

### Specificity:

Characterised for IGF-I immunohistochemistry in sections from human, rat, mouse and barramundi (fish) tissues.  
Does not detect IGF-II

### Appearance:

Lyophilized powder

### Storage/Stability:

At least 2 years at 2 - 4°C (lyophilized).  
After reconstitution store at -20°C or -80°C  
Avoid freeze-thaw cycles

### Reconstitution:

Dissolve the vial contents in 1 ml deionised water and then dilute into an appropriate buffer for the application.

### Application and Titre:

Each application and titre should be determined in house. We recommend 1:50 for immunohistochemistry. Best results are obtained by using LR<sup>3</sup>IGF-I as a competitive control. Examples are shown below.

### Product Codes and Pricing

#### IGF-I

#### Polyclonal Antibody

1 mg

PABCa

US\$150

### Related Products:

Human IGF-I Polyclonal Antibody  
Human IGF-I (Receptor grade)  
Chicken IGF-I  
Rat IGF-I

**\*\*NOT FOR USE IN HUMANS\*\***

GroPep Bioreagents Pty Ltd  
BioSA Incubator  
40-46 West Thebarton Road  
Thebarton SA 5031  
Australia

Postal Address:  
PO Box 10065  
Adelaide Business Centre  
SA 5000  
Australia

Email:  
[info@gropep.com](mailto:info@gropep.com)

Internet:  
[www.gropep.com](http://www.gropep.com)

ABN 93 147 032 166

Telephone: +61 8 8152 9360  
Fax: +61 8 8152 9475

# GroPep Bioreagents

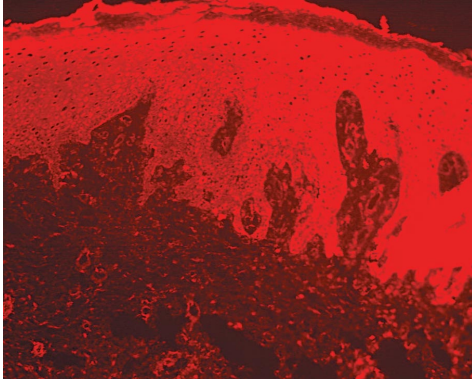


Figure 1 Human Skin

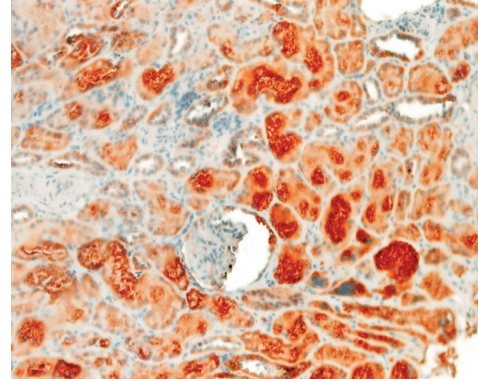


Figure 4 Human Kidney

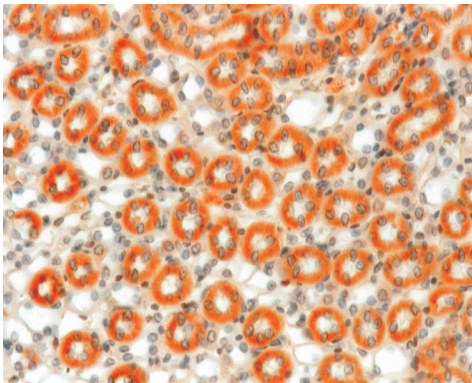


Figure 2 Mouse Kidney

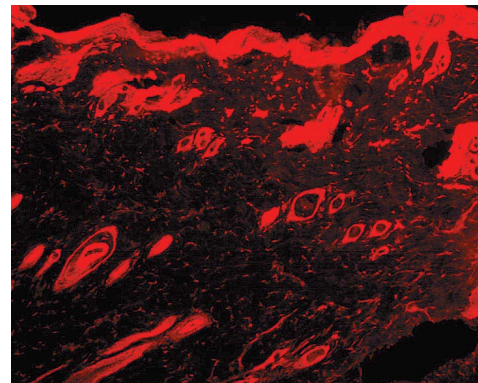


Figure 5 Rat Skin

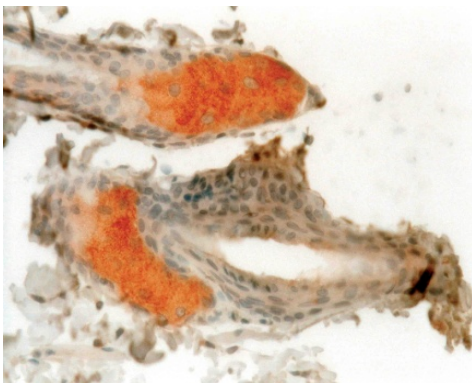


Figure 3 Rat Sebaceous Gland

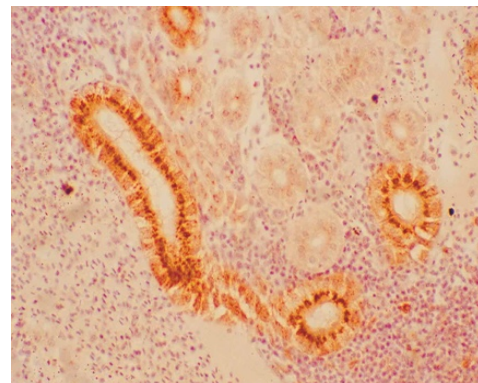


Figure 6 Barramundi (Fish) Kidney

**GroPep Bioreagents Pty Ltd**  
BioSA Incubator  
40-46 West Thebarton Road  
Thebarton SA 5031  
Australia

**ABN** 93 147 032 166

**Telephone:** +61 8 8152 9360  
**Fax:** +61 8 8152 9475

**Postal Address:**  
PO Box 10065  
Adelaide Business Centre  
SA 5000  
Australia

**Email:**  
[info@gropep.com](mailto:info@gropep.com)

**Internet:**  
[www.gropep.com](http://www.gropep.com)